

Automatic Ash Removal for boilers D15P, D20P, D30P, D45P

Automatic cleaning of ash from the boiler

As an accessories for every boiler DxxP made after 1.3.2007 you can buy automatic ash cleaner/remover from boiler into an external ash pan /30/. Which you can empty once per 14 – 45 days depending on quality of pellets and intensity of heating. The boiler is cleaned automatically by the auger conveyor with gearbox /1/. It cleans the ash dropping space in the boiler in regular intervals in 1 hour, in 3 hours or in 12 hours depending on type of used fuel. It is possible to switch the automatic cleaning manually by pressing the main switch on and off on the boiler then the auger runs for approx. 10minutes. The ash cleaning is controlled automatically by control unit placed under the main board of the boiler which after filling the ash-pan starts to wristle for a moment. After emptying the ash-pan /30/ we have to restart by switching on and off the main switch on the boiler.

The automatic ash cleaning does not need any special threating. The only threating it needs is emptying the ash-pan /30/ which is fitted to the boiler with two clips /32/ which during operation of the boiler must be properly closed so that it could not push the ash out of the boiler into the boiler room. The all ash cleaning set must be properly connect to the boiler as well.

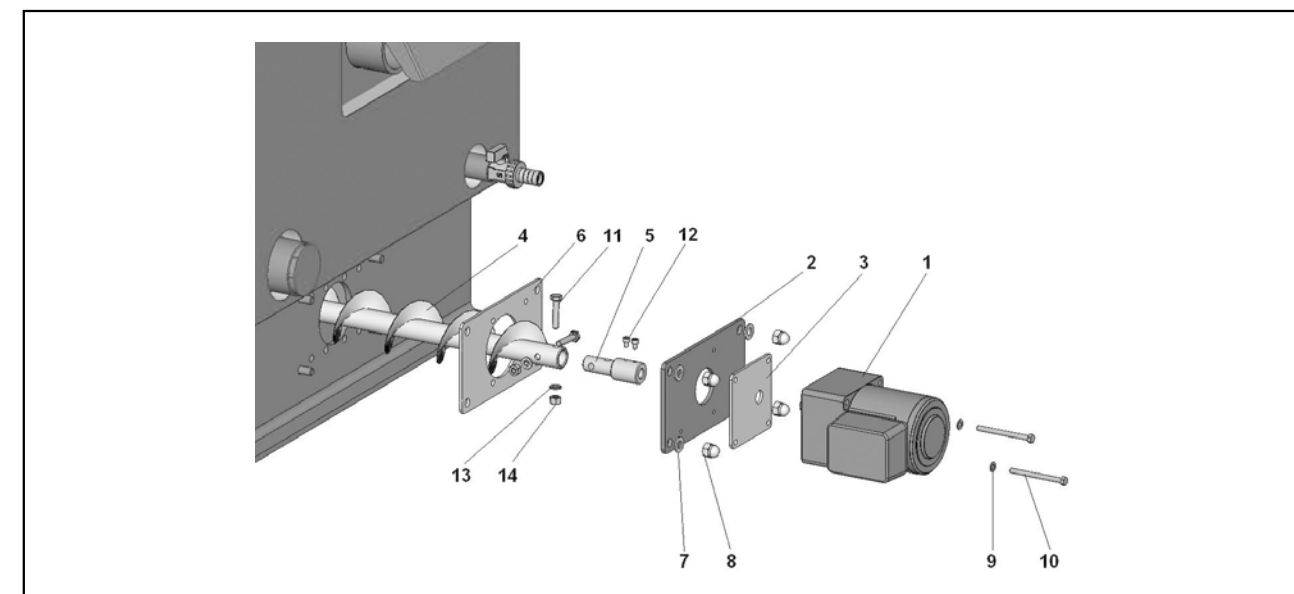
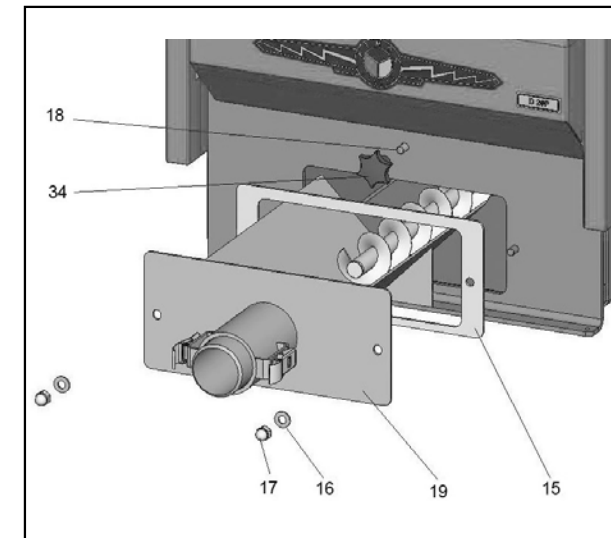
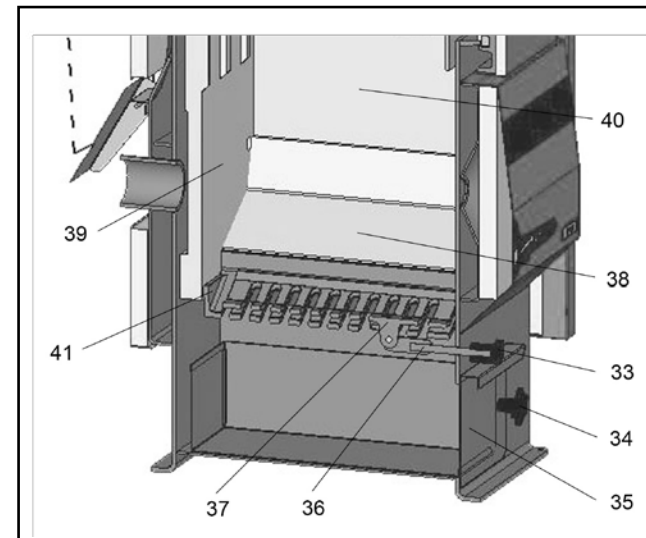
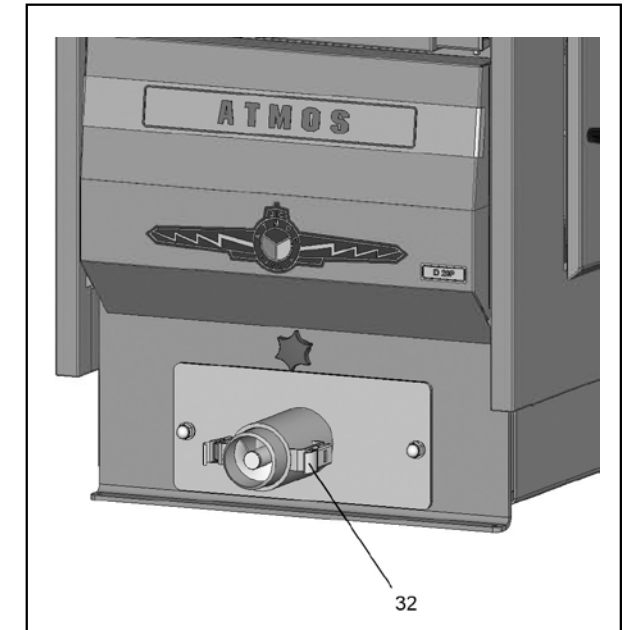
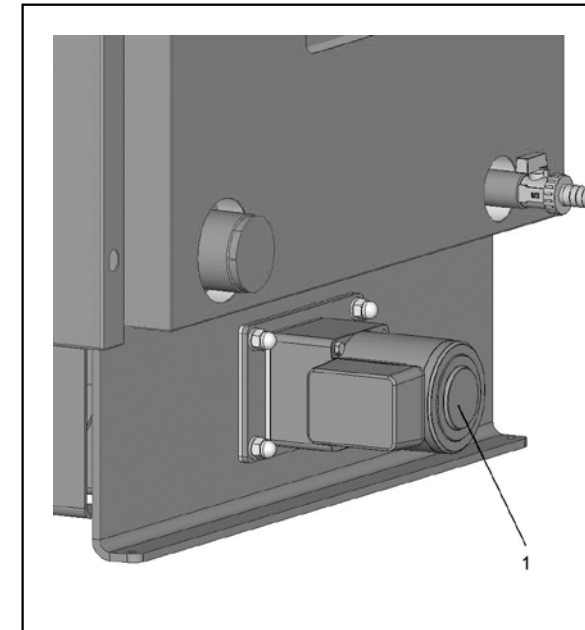
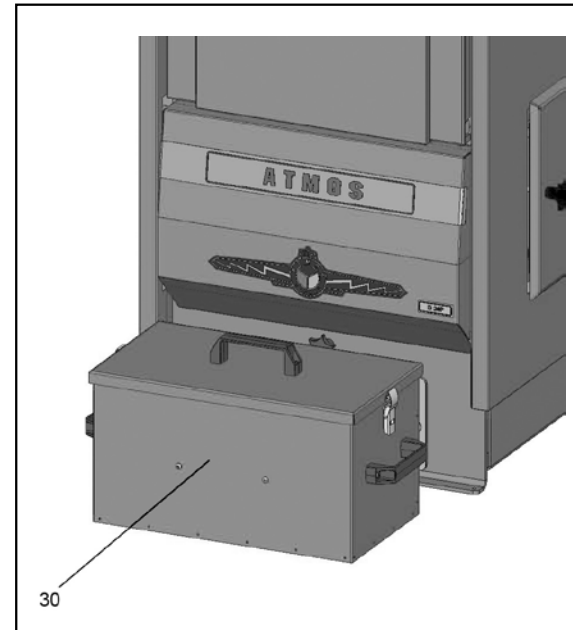
Process of dismantling of old parts

Before installing the ash cleaning set into the boiler we must dismantle some parts.

- 1) unscrew two female screws /34/ which tighen the ash-pan /35/ to the boiler. Take the ash-pan /35/ out since you do not need it anymore.
- 2) dismantle the moving grate from the boiler. Its rod is in the front side of the boiler. Un-screw the thumb nut /33/ with safety nut. Then take out the side ceramic parts /40/ and the bottom ceramic part /38/ in the combustion chamber. Do not take out the rear ceramic part /39/ of the combustion chamber. Then you can easily take out the rod of the moving grate /36/ the moving grate /37/ and the stationary grate /41/. Separate the moving and stationary grate from each other. Then we put the stationary grate /41/ with complete side ceramic parts /38,40/ down on its place in the boiler. They remain in the boiler. When installing boiler with ATMOS A70 Petro burner and automatic ash cleaner we have take out the stationary grate /41/ as well. We put down 3 short stationary grates instead which hold the side ceramic parts before dropping down.
- 3) in the back side of the boiler dismantle the covering sheet plate with insulating cord. Later at this place we will fit the gear box of the auger /1/.

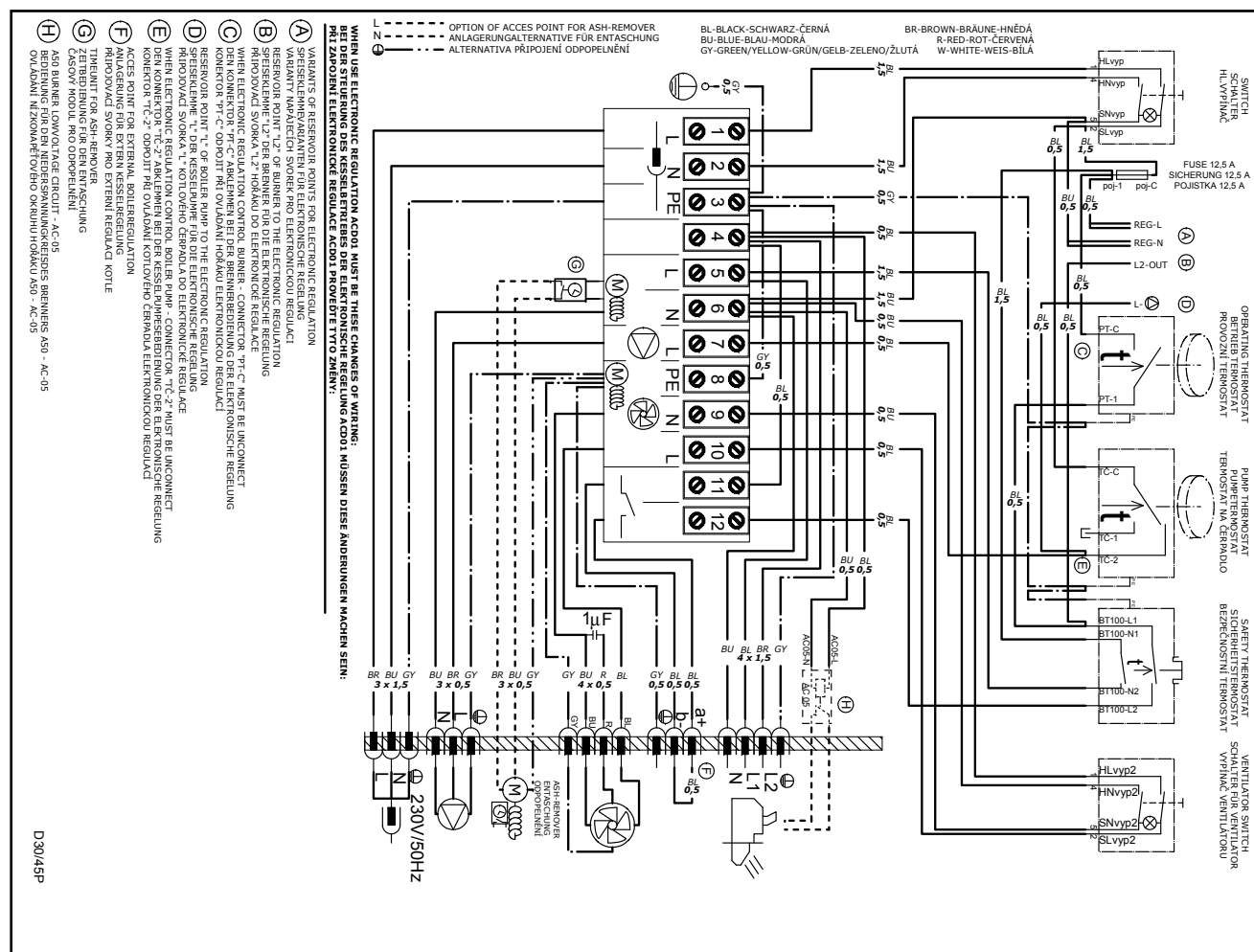
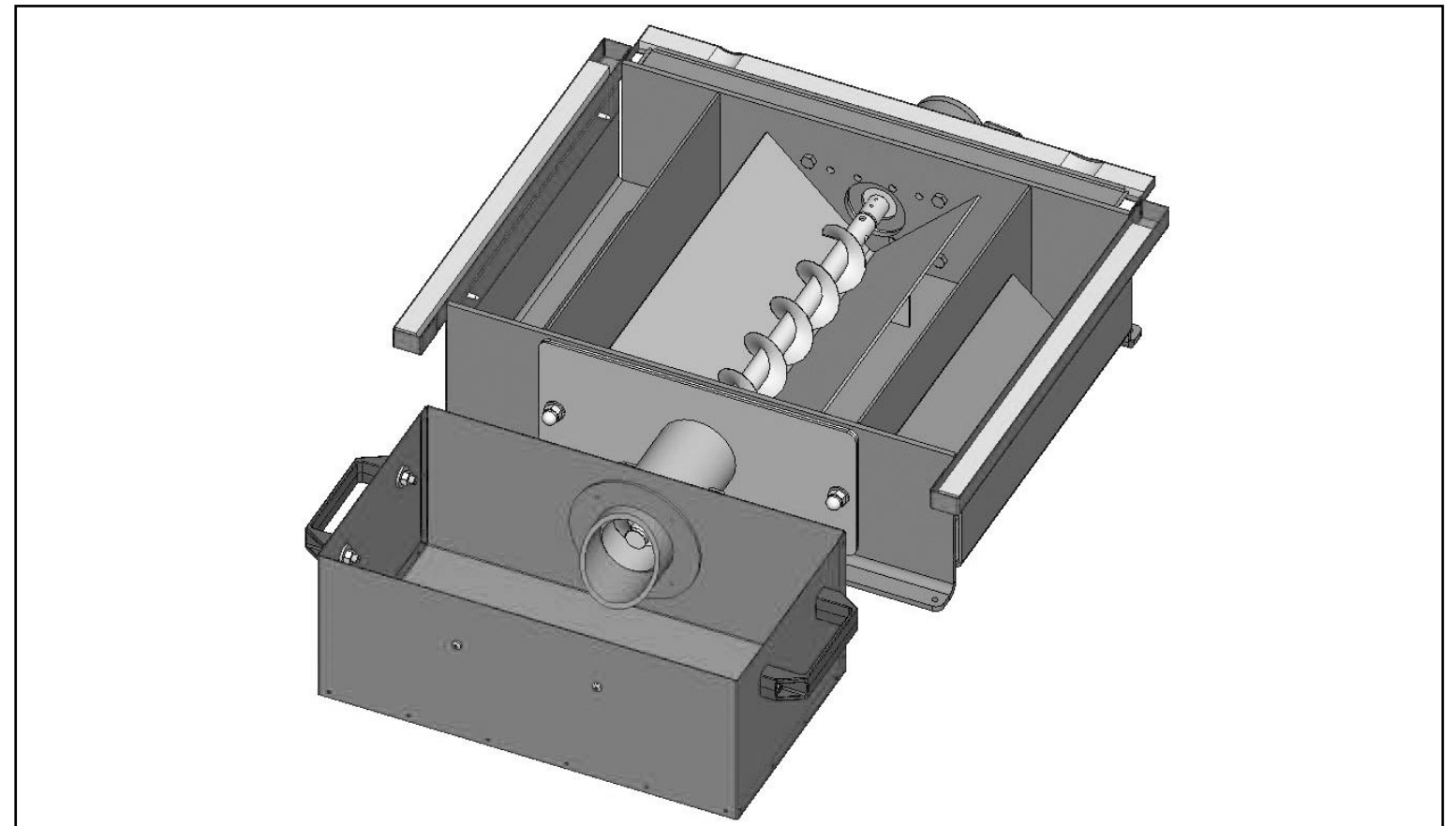
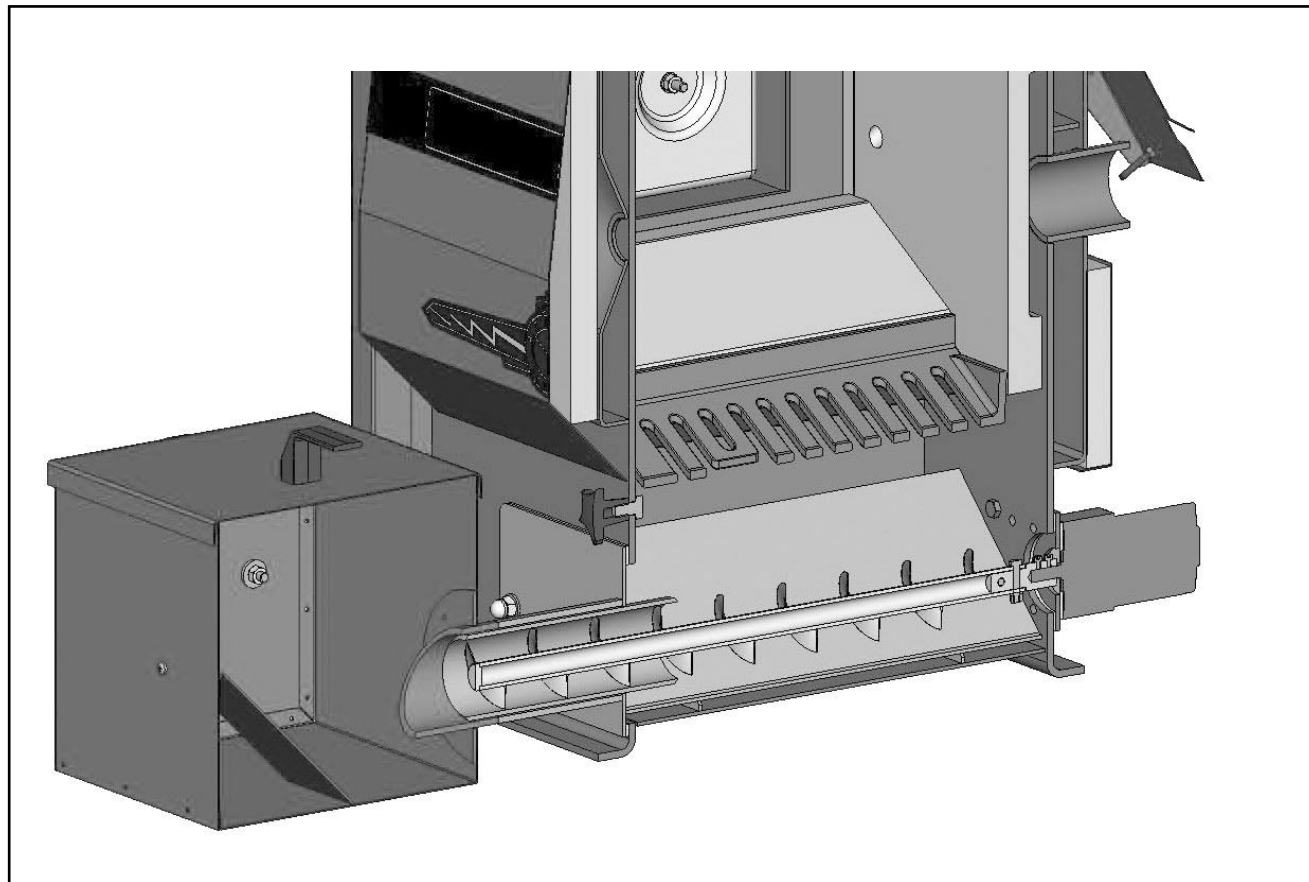
Process of fitting the ash cleaner on the boiler

- 1) seal the hole where the moving grate rod was with a thumb nut /34/ and a screw M10x20 /18/.
- 2) put the sealing /15/ on and fit the cleaning set /19/ into the boiler and tighten it with washer M10 /16/ and a screw nut M10 /17/.
- 3) put together the gear box /1/ sealing /3/ and a sheet plate /2/ outside the boiler. For it use screw M5x80 /10/ and a washer M5 /9/.
- 4) fix the auger /4/ to the gear box /1/ and tighten it with two screw M4x10 /12/. The auger set consists of a few parts /4, 5, 11, 12, 13, 14/
- 5) put the sealing /6/ on and fit the cleaning set into the boiler. Then check the proper tightening of the set with boiler. It is tighten with 4 washers M8 /7/ and screws M8 /8/.
- 6) put the ash-pan on the outletting pipe and fix its position with clips /32/ **to the boiler so that it could not push the ash out of the boiler into the boiler room.**
- 7) connect the cable from the gear box /1/ to the terminal block on the boiler. Make the electronic installation directly after the manual instruction for D15P, D20P, D30P and D45P boilers. At the end check proper tightening of all components.



Legend:

1. gear box 25W / 230V/ 50Hz (1pc)
2. gear box sheet plate (1pc)
3. gear box insulation (1pc)
4. auger (1pc, included in the set)
5. gear box and auger adapter (1pc)
6. insulation under the gear box sheet plate (1pc)
7. washer M8 (4pcs)
8. screw M8 (4pcs)
9. washer M5 (2pcs)
10. screw M5x60 (2pcs)
11. screw M6x30 (2pcs included in the set)
12. screw M4x10 (2pcs included in the set)
13. washer M6 (2pcs included in the set)
14. female screw M6 (2pcs included in the set)
15. sealing of the cleaning set body (1pc)
16. washer M10 (2pcs)
17. female screw M10 (2pcs)
18. screw M10x20 (1pc)
19. cleaning set body (1pc)
30. ash-pan (1pc)
32. clips (2pcs included in the set)
33. handle (1pc)
34. thumb nut M10 (2pcs)
35. standard ash-pan (2pcs)
36. moving grate rod (1pc)
37. moving grate (1pc)
38. bottom of the combustion chamber (2pcs)
39. rear ceramic part (1pc)
40. side ceramic part (1pc)
41. stationary grate (1pc, D30P and D45P completed)



Wiring diagram for boilers D15P, D20P, D30P, D45P with connection for automatic ash removing control unit signed G on the terminal block of the boiler.



Holder of side ceramic parts. Included in the delivery for ash removing for boilers D45P – 3pcs.



Fitting the holders (spreaders) into the boiler when installing the ATMOS A70 Petro burner.